

GTK3-121



700851

Bartscher GmbH
Franz-Kleine-Str. 28
D-33154 Salzkotten
Germany

Phone: +49 5258 971-0

Fax: +49 5258 971-120

Technical Support Hotline: +49 5258 971-197

www.bartscher.com



Version: 1.0

Date of preparation: 2024-09-18

Original instruction manual

1	Safety	2
1.1	Explanation of Signal Words	2
1.2	Safety instructions	3
1.3	Intended Use	6
1.4	Unintended Use	6
2	General information	7
2.1	Liability and Warranty	7
2.2	Copyright Protection	7
2.3	Declaration of Conformity	7
3	Transport, Packaging and Storage	8
3.1	Delivery Check	8
3.2	Packaging	8
3.3	Storage	8
4	Technical Data	9
4.1	Technical Specifications	9
4.2	List of Components of the Appliance	11
4.3	Functions of the Appliance	12
5	Installation and operation	12
5.1	Installation	12
5.2	Operation	14
6	Cleaning and Maintenance	16
6.1	Safety Instructions for Cleaning	16
6.2	Cleaning	16
6.3	Maintenance	17
7	Possible Malfunctions	18
8	Disposal	20



Read these instruction manual before using the appliance and keep it available at all times!

This instruction manual contains information about installation, operation and maintenance of the appliance and constitutes an important source of information and reference guide. The knowledge of all operational and safety instructions included in this manual is a prerequisite for safe and proper handling of the appliance.

Read this instruction manual before you use the appliance and particularly before you start the appliance to prevent injury or damage. Incorrect use may cause damage.

All important information contained in the operating instructions must be available to the appropriate staff at all time. The operator shall be responsible for their availability.

In addition to the operating instructions, you must comply with the general, legal and other applicable regulations for occupational safety and environmental protection.

EN

1 Safety

This appliance has been manufactured in accordance with technical standards currently in force. However, the appliance may be a source of hazards if used improperly or contrary to its intended purpose. All persons using the appliance must consider information included in this instruction manual and observe safety instructions.

1.1 Explanation of Signal Words

Important safety instructions and warning information are indicated in this instruction manual with appropriate signal words. You must strictly follow the instructions, to prevent accidents, personal injuries and property damages.



DANGER!

The signal word **DANGER** warns against hazards that lead to severe injuries or death if the hazards are not avoided.



WARNING!

The signal word **WARNING** warns against hazards that may lead to moderate or severe injuries or death if the hazards are not avoided.



CAUTION!

The signal word **CAUTION** warns against hazards that may lead to light or moderate injuries if the hazards are not avoided.

IMPORTANT!

The signal word **IMPORTANT** indicates possible property damages, which may occur if safety instructions are not observed.

NOTE!

The symbol **NOTE** indicates subsequent information and guidelines for the user on usage of the appliance.

EN

1.2 Safety instructions

Electrical Current

- Too high a mains voltage or incorrect installation may cause electric shock.
- The appliance may be connected only if data on the rating plate correspond with the mains voltage.
- To avoid short-circuit, the appliance should be kept dry.
- If there are malfunctions during operation, disconnect the appliance from the power supply.
- Do not touch the appliance's plug with wet hands.
- Never take hold of the appliance if it has fallen into water. Immediately disconnect the appliance from the power supply.
- Any repairs or housing opening may be carried out by professionals and relevant workshops only.
- Do not transport the appliance, holding it by the power cord.
- Do not allow the power cord to come into contact with heat sources or sharp edges.
- Do not bend, pinch nor knot the power cord.

- Always completely unwind the power cord.
- Never place the appliance or other objects on the power cord.
- Always take hold of the plug to disconnect the appliance from the power supply.
- Check the power cord regularly for damage. Do not use the appliance if the power cord is damaged. If this cable is damaged, it must be replaced by customer service or a qualified electrician in order to avoid dangers.

Fire hazard / flammable materials hazard / explosion hazard!

- Do not use any electric devices in the appliance.
- Do not store nor use petrol or other flammable liquids and gases in the vicinity of this or any other appliance. Those gases may cause fire or explosion hazard.
- Do not put into the appliance any explosive materials, like sprays filled with flammable propellants. Contents of containers filled with flammable gases and liquids may leak in low temperatures, and the contents may catch fire from sparks generated by an electric appliance. Explosion hazard!
- In the case of coolant leakage, pull the plug from the socket. Remove all sources of ignition in the vicinity, ventilate room and contact technical service. Avoid coolant getting in contact with eyes, as it may cause serious eye damage.
- Never use any flammable liquids for cleaning the appliance or its parts. Gases released may cause fire or explosion hazard.
- In the case of fire, disconnect the appliance from the power supply before attempting adequate fire-extinguishing actions.
- Never attempt to extinguish fire with water if the appliance is connected to the power supply. Following extinction of fire, ensure sufficient fresh air inflow.
- Defrosting process may not be sped up with mechanical means or heat energy sources (candles or heaters) nor with any other means. Vapour produced may cause short-circuit and too high temperatures may damage the appliance.
- All ventilation slots should not be obstructed during operation.
- Never attempt to damage cooling installation of the appliance.

Operating Personnel

- The device can be used by children of 8 years old and older, as well as by people with reduced physical, sensory or mental abilities and those with limited experience/knowledge as long as they are under supervision or have been instructed on safe use of the device and possible risks. Children should not play with the device.
- Cleaning and user maintenance may not be performed by children.
- Keep children under 8 years of age away from the appliance and the power cord unless they are under constant supervision.

Improper Use

- Unintended or prohibited use may cause damage to the appliance.
- The appliance may only be used when its technical condition is flawless and allows for safe operation.
- The appliance may only be used when all connections are executed according to rules of law in force.
- The appliance may only be used when it is clean.
- Use only original spare parts. Never attempt to repair the appliance on your own.
- Do not introduce any changes in the appliance nor modify it.
- Do not use any electric appliances inside the cooling compartment, unless they are of the type approved by the manufacturer.
- Do not drill hole in the appliance nor install any objects on it.
- Do not place any heavy objects on the appliance.

1.3 Intended Use

This appliance is only intended for use described in the operating instructions, with the supplied and approved components.

Any other use is considered against the intended purpose. The manufacturer shall not be liable for any damage due to unintended use. In such cases the responsible party shall only be the user/operator

The following is an intended purpose

- Cooling and preparation of suitable beverages and food products.

The appliance is suitable for indoor and outdoor use, provided it is protected against adverse weather conditions.

This appliance is intended for use in households and similar places, e.g.:

- in employee canteens in shops, offices, and similar areas;
- on farms;
- by customers in hotels, motels, and other typical accommodation establishments;
- in lodging-houses.

EN

1.4 Unintended Use

An unintended use may lead to personal injuries or property damages caused by hazardous voltage, fire or high temperature. The appliance may only be used to perform tasks described in this instruction manual.

The following is an unintended use:

- Storing flammable or explosive objects and liquids, such as ether, petroleum or adhesives;
- Storing explosive materials, like sprays filled with flammable propellants;
- Storing pharmaceutical products or preserved blood;
- Storing live pets.

2 General information

2.1 Liability and Warranty

The appliance was built in accordance with the current state of the art and recognized technical safety principles. Nevertheless, during its use, there may be a threat to the health and life of the user or bystanders, or the danger of damage to the device or other assets. Warranty and liability claims for personal injury/property damage as well as defects at work are excluded if they can be attributed to one or more of the following causes:

- Use against the intended purpose
- Failure to follow/disregard the instructions and all related information
- Unauthorized structural or technical changes to the device
- Engaging insufficiently trained and insufficiently qualified personnel
- Operation with defective or incorrectly installed safety and protective devices
- Inadequate maintenance or cleaning
- Faults not fixed
- Use of prohibited media, cleaning agents, etc.
- Use of unauthorised spare parts
- Errors in operation or other misuse
- Disasters caused by foreign objects or force majeure
- Destruction of the type plate and stickers relevant for operation and safety

The warranty period for this appliance is 24 months, counted from the purchase date.

EN

2.2 Copyright Protection

This instruction manual, and texts, drawings and images included in it, as well as its other components are copyright protected. It is prohibited to reproduce this instruction manual (including its excerpts), in any form and by any means, and to use and/or transfer its content to third parties without manufacturer's written permission. Violation of the above results in obligation to pay compensation. We reserve the right to claim further damages.

2.3 Declaration of Conformity

The appliance meets the currently applicable standards and guidelines of the European Union. We confirm the above in the EC Declaration of Conformity. We may provide relevant Declaration of Conformity upon request.

3 Transport, Packaging and Storage

3.1 Delivery Check

Immediately upon reception, check the delivery for completeness and possible shipping damage. In the case of visible transport damage refuse to accept the appliance or accept it conditionally. Mark and note the scope of damage in shipping documents/consignment list of the shipping company and lodge a complaint. Concealed damage must be reported immediately upon its discovery, as compensation claims may only be filed within applicable time limits.

If you find that parts or accessories missing, please contact our Customer Service Department.

3.2 Packaging

Do not dispose of the appliance cardboard box. It may be used to store the appliance when relocating or when shipping the appliance to our service point in the case of any damages.

The packaging and its elements are made of recyclable materials. Particularly, these are: plastic films and bags, cardboard box.

When disposing of the packaging, observe applicable domestic regulations. Recyclable packaging materials should be recycled.

3.3 Storage

Leave the packaging closed until installation of the appliance; observe external indications concerning method of placing and storage. Store the packaging in the following conditions only:

- in closed rooms;
- in dry and dust-free surrounding;
- away from aggressive agents;
- in a location protected against sunlight;
- in a location protected against mechanical shocks.

In the case of extended storage (over three months), make sure you check the condition of the packaging and the parts regularly. If needed, replace the packaging with a new one.

4 Technical Data

4.1 Technical Specifications

Name:	Glass-doored refrigerator GTK3-121
Art. No.:	700851
Material:	CNS 18/10 tinted glass
Inner material:	plastic
Volume, in l:	63
Usable volume in sq.m:	0,19
Temperature range, min.– max., in °C:	2 - 14
Ambient temperature, min.– max., in °C:	16 - 38
Amount of coolant, in kg:	R600a / 0,023
Climate class:	ST
Energy efficiency class:	A (EU Nr. 2019 / 2018)
Energy consumption, in kWh/year:	345
GWP index:	3
Degree of protection:	IPX4
Number of doors:	1
Number of shelves:	3
Shelf dimensions (W x D), in mm:	335 x 350
Type of shelves:	wire rack, chrome-plated
Connected load:	0,06 kW 220-240 V 50 Hz
Dimensions (W x D x H), in mm:	430 x 555 x 675
Weight, in kg:	35,0

We reserve the right to implement technical modifications.

Version / Characteristics

- Colour: stainless steel
- Cooling: compressor
- Temperature control:
 - control knob
 - stepless
- Thermostat
- Control: rotary control knob
- Automatic defrost function: no
- Evaporation of condensed water: no
- Insulation: cyclopentane, 37 mm
- Type of shelves: grille, chrome-plated
- Height-adjustable shelves
- Door type: leaf door, glass
- Front pane: cased / framed
- Type of glazing: insulating safety glass with UV filter
- Safety glass: yes
- Door hinge: right side
- Door with no possibility for door hinge to be changed
- Internal lighting: LED, may be switched separately
- LED lighting ON/OFF switch
- Lockable
- **Important indication:**
 - for indoor use
 - for outdoor use provided it is protected against adverse weather conditions
 - possibility to be built-in provided there is a min. 15 cm of free space around

More information on the appliance is available in our website www.bartscher.com or, pursuant to the Regulation (EU) 2019/2018, in our product data base at <https://energy-label.ec.europa.eu/>. Enter article number for a given model.

4.2 List of Components of the Appliance

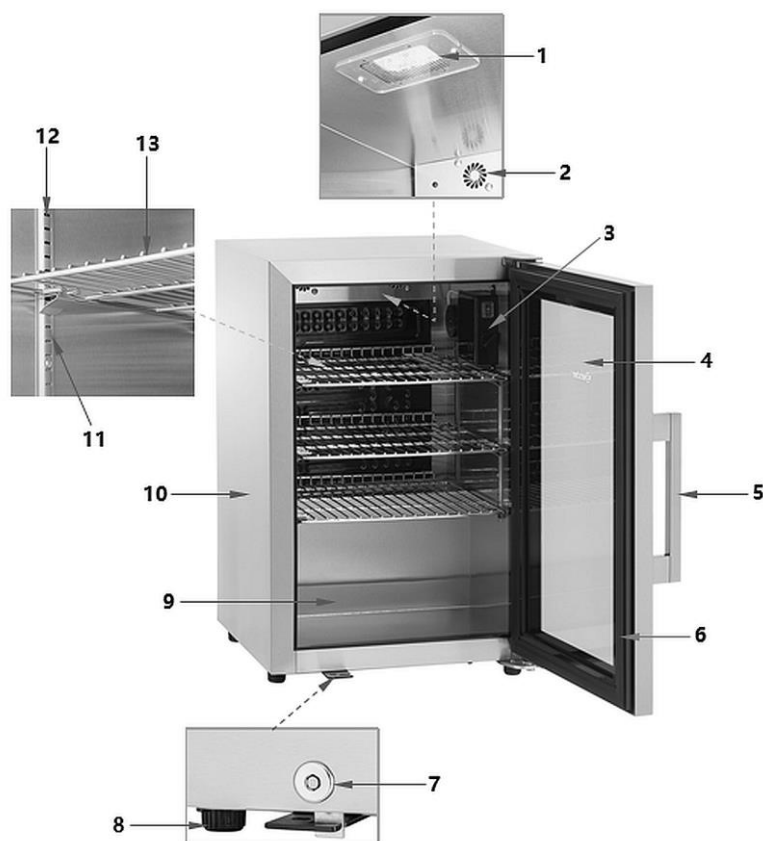


Fig. 1

- | | |
|----------------------------|--------------------------|
| 1. LED lighting | 2. Ventilation openings |
| 3. Control elements | 4. Glass door |
| 5. Glass pane door handle | 6. Glass door seal |
| 7. Lock | 8. Foot (4 pcs) |
| 9. Bottom display surface | 10. Housing |
| 11. Shelf support (12 pcs) | 12. Shelf guides (4 pcs) |
| 13. Shelve (3 pcs) | |

4.3 Functions of the Appliance

In the compact glass-doored refrigerator with a modern design, suitable beverages and food can be kept cool on 3 shelves behind the glass door with UV filter. The optimum cooling temperature can be set steplessly via a rotary controller inside the appliance.

5 Installation and operation

5.1 Installation

Unpacking / Positioning

- Unpack the appliance, remove all external and internal packaging elements and shipment safeguards.



CAUTION!

Choking hazard!

Prevent children from accessing packaging materials, for instance: plastic bags and EPS elements.

- If the appliance is covered with a protective film, remove it. Remove the film slowly, so no glue residues are left. Remove any glue residues with the use of a suitable solvent.
- Be careful not to damage the rating plate and warning labels affixed to the appliance.
- **Never** place the appliance in humid or wet environment.
- Place the appliance in a way making the connections easily accessible, so that they may be quickly disconnected if such a need arises.
- When selecting the installation site, please consider the following items:
 - The mounting surface must be even, sufficiently load-bearing, waterproof, dry and resistant to high temperatures.
 - Make sure that the designated escape routes are clear.
 - Ensure a stable position.
 - Allow sufficient space for work, maintenance and cleaning.
 - Leave the supply and exhaust air vents, if any, free.
 - Comply with applicable technical and building regulations.

Installation and operation

- Do not place the appliance in direct sunlight or in the vicinity of heat sources (cooker, radiator, heating devices, etc.). Heat sources may negatively affect power consumption, and restrict functions of the appliance, too.
- Place the appliance so that sufficient air circulation is ensured. Do not block nor cover ventilation openings in the rear wall of the appliance.
- Leave at least 10 cm clearance from walls and other objects.
- The appliance is suitable for built-in use provided that at least 15 cm of free space is left around it.
- Do not position the appliance in high humidity locations. Excessive humidity may cause rust and negatively influence the refrigerating efficiency of the device.
- The appliance should be installed only in rooms, in which ambient temperature falls within the range of 16 °C – 38 °C.
- In order to avoid damage to the compressor, do not tilt the appliance more than 45° when positioning or transporting it.

Fixing of Door Handle

1. Before the first use, fix the supplied stainless steel handle to the appliance door.
2. Move the rubber seal on the door internal side left or right to uncover the fixing holes.
3. Fix the handle to door with enclosed screws.
4. Then replace the seal in correct position.

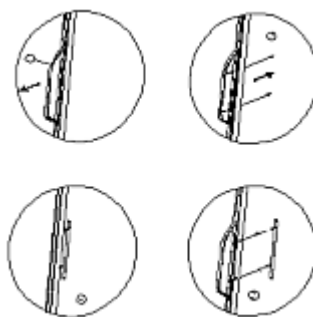


Fig. 2

Power supply connection

- Verify if technical data of the appliance (see rating plate) correspond with the local electric power grid specification.
- Connect the appliance to a single, properly grounded mains socket with protective contact. Do not connect the appliance to a multi-socket.
- The power cord should be laid in a way preventing anyone from threading on it or tripping against it.
- Prior to first use, the appliance should be installed and left standing upright for at least 12 hours, before it is connected to power supply.
- After a power failure or when the plug is removed from the socket, do not reconnect the appliance to power supply for at least 15 minutes.
- The appliance should not be used at ambient temperatures below 0°C.
- The switched-off appliance can be left at temperatures below 0°C in a protected outdoor area, but the door must be left open. Check the condition of the appliance and the electrical connection before next use.

EN

5.2 Operation

Before First Use

1. Before the first use, clean the appliance inside and outside, as well as accessories, using luke-warm water and a soft cloth. Additionally, follow instructions in section 6 '**Cleaning**'.
2. To end with, thoroughly dry the appliance and accessories.
3. Fix the shelf supports on guide rails at selected height.
4. Put shelves on supports.
5. Plug the appliance into a suitable single socket.
6. Set the required temperature. Follow indications provided in subsequent sections.

Control Elements



Fig. 3

14. LED lighting ON/OFF switch

15. Temperature controller

Appliance Operation

Temperature Setting

1. By rotating the temperature controller (15, Fig. 2) inside the appliance, set the selected temperature to one of available values in the range of 1–6.

The temperature can be set between 2°C and 14°C. The temperature can be adjusted at any time.

Switching LED Lighting ON/OFF

The appliance is equipped with LED lighting.

1. If necessary, switch the LED interior lighting on by setting the ON/OFF switch (14, Fig. 2) inside the appliance to '**I**' (**ON**) position.
2. To switch the LED lighting off, set the ON/OFF switch inside the appliance to the '**O**' (**OFF**) position.

Switching Appliance OFF

1. When the appliance is not in use, switch the LED lighting off.
2. Set the temperature controller to '**0**' (**OFF**) position.
3. Disconnect the appliance from power supply (pull the plug out).

6 Cleaning and Maintenance

The operator must ensure that the device and its safety components are kept in good condition. Control and safety systems should be checked for their effectiveness.

Maintenance, cleaning and repairs must only be carried out by suitably trained and specialised personnel.

If the safety devices need to be removed for maintenance, cleaning and repair, they should be reinstalled immediately after completion and their function should be checked.

All maintenance and cleaning work must be carried out in accordance with the operating instructions at the specified intervals.

6.1 Safety Instructions for Cleaning

- Before cleaning, disconnect the appliance from the power supply.
- Leave the appliance to cool down completely.
- Make sure water does not enter the appliance. Do not immerse the appliance in water or other liquids during cleaning. Do not clean the appliance with a pressurized water jet.
- Do not use any sharp or pointed, nor metal implements (knife, fork, etc.). Sharp or pointed implements may damage the appliance, and when in contact with live parts, they may cause electric shock.
- For cleaning, do not use any scouring agents that contain solvents nor corrosive cleaning agents. They may damage the surface.

6.2 Cleaning

1. Clean the appliance regularly.
2. Before cleaning, remove all beverages and food from the appliance and store them temporarily in a cool room.
3. Pay attention to the following instructions for cleaning individual elements.

Appliance Interior

1. Clean the appliance interior with warm water, using gentle washing agent and a soft cloth.
2. Clean shelves with a soft, damp cloth. Remove them if necessary.
3. Thoroughly dry cleaned surfaces and elements with a soft cloth.
4. Leave the appliance door open for the appliance to dry completely.

Door Seal

1. Clean the door seal regularly only with a soft, damp cloth.
2. In order to assure correct closing of the glass door and operation of the appliance, make sure that particularly the door seal is clean.

Housing

1. Clean the appliance exterior with a soft cloth, soaked in warm water and a gentle cleaning agent.
2. Then dry the appliance thoroughly with a soft cloth.

6.3 Maintenance

Extraction Opening/Fan

The cooling efficiency may be reduced due to accumulation of dust or other contaminants blocking the extraction openings.

1. Vacuum the extraction opening if necessary.

Condensate Tank (K)

1. Using a sponge, remove the condensed water from the condensate tank (K) regularly.

The condensate tank (K) is located at the rear wall of the appliance, bottom right.



EN

Manual Defrosting

1. The appliance should be defrosted at least every half a year.

ATTENTION!

When the appliance door is often opened, defrosting should be performed more frequently.

2. Turn the appliance off and remove the plug from the socket.
3. Then start the manual defrosting.
4. Monitor the condensate tank (K) and remove the water accumulating during the defrosting process.

Spare Parts

Spare parts for the purpose of repairing this appliance, as stipulated in Annex II to the REGULATION (EU) 2019/2018, are available for at least eight years, counted from the date of introduction of the last appliance of this model to market.

7 Possible Malfunctions

The table below contains descriptions of possible causes and solutions to malfunctions or errors during operation of the appliance. The works may only be performed by suitably qualified technical personnel.

When malfunction cannot be removed, contact the technical service. In such a case, provide article number, model and serial number. You will find this information on the rating plate.

Malfunction	Possible Cause	Solution
Appliance does not work	Incorrectly connected plug	Remove the plug and insert it properly into a socket
	Electric power supply safety fuse damaged	Check the fuse, connect the appliance to another socket and check it
	No power supply	Check the electric power supply
	Damaged socket	Plug the appliance into another socket
	Damaged mains power plug	Contact the service company
Insufficient cooling power; the appliance does not reach pre-set temperature	Temperature set incorrectly	Check the set temperature and change it if needed
	Door is not closed properly or it has been opened for too long	Close the door tightly; limit the door opening time to minimum
	Door seal damaged/deformed	Contact the service company
	Poor air circulation around the appliance	Ensure sufficient clearance from walls or other objects
	Ambient temperature too high	Ambient temperature in installation place should be in the range of 16–38°C

Possible Malfunctions

Malfunction	Possible Cause	Solution
Lighting does not work	Damaged lighting	Contact the service company
Appliance is vibrating	Appliance is not placed on even surface	Place the appliance on an even surface
Appliance operation is too loud	Loose elements (e.g. nuts/screws)	Check all screws and nuts, tighten if necessary
	Appliance is not placed on even surface	Place the appliance on an even surface
	Appliance touches walls or other objects	Ensure sufficient clearance from walls or other objects
Door fails to close properly	Appliance is not placed on even surface	Place the appliance on an even surface
	Door has been incorrectly installed	Contact the service company
	Worn door seal	Contact the service company
	Wooden shelves slide off or are incorrectly set	Fix wooden shelves correctly in the internal chamber
Compressor does not start	Ambient temperature is lower than the set temperature	Maintain temperature in the installation location
Dew on the appliance's surface	Air humidity in installation location is too high	Remove dew using a soft cloth
Condensation in the refrigerator	Appliance door was open for a longer period or they are opened too frequently	Keep them closed as long as possible

The following phenomena are not malfunctions:

Various sounds that are generated by the appliance during operation are a normal phenomenon and do not indicate any malfunctions.

- Splashing, bubbling and hums are generated by the coolant that circulates the system.
- Short, louder whirring/hooting or clicking sounds may be heard when the compressor of the appliance starts for the pre-set temperature of the appliance internal chamber be restored.

8 Disposal

Electrical Appliance



Electric appliances are marked with this symbol. Electrical appliances must be disposed of and recycled in a correct and environmentally friendly manner. You must not dispose of electric appliances with household waste. Disconnect the appliance from the power supply and remove power cord from the appliance.

EN

Electrical appliances should be returned to designated collection points.

Coolant

The propellant used in the appliance is flammable. It should be utilised pursuant to national regulations in force.