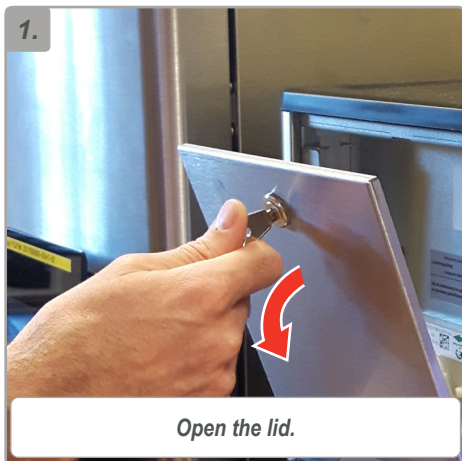
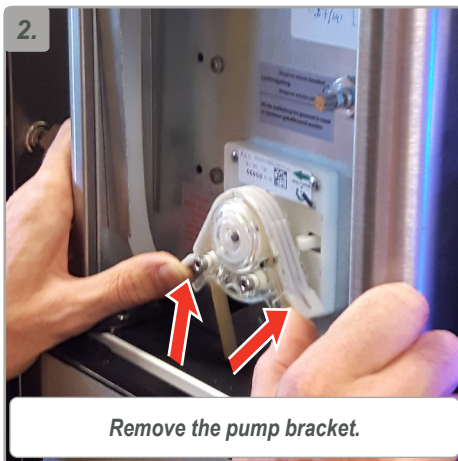


FreshMilk - hose replacement

FreshMilk version 1.0



Open the lid.



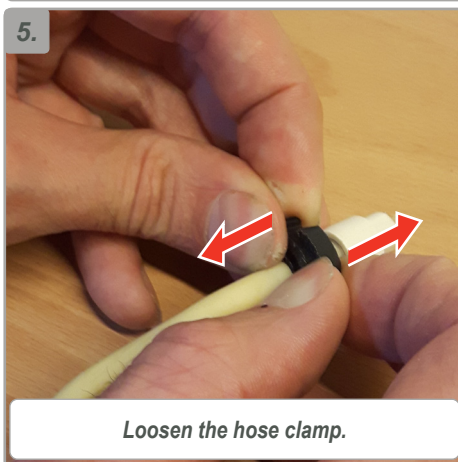
Remove the pump bracket.



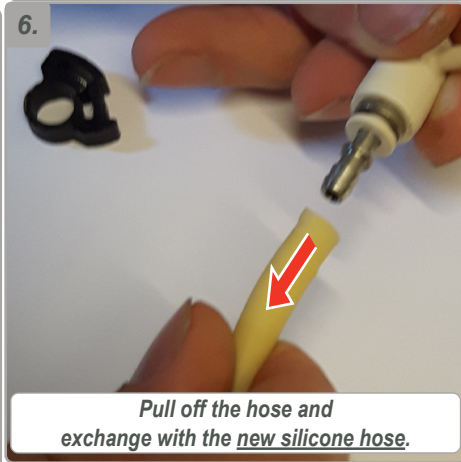
Remove the hose.



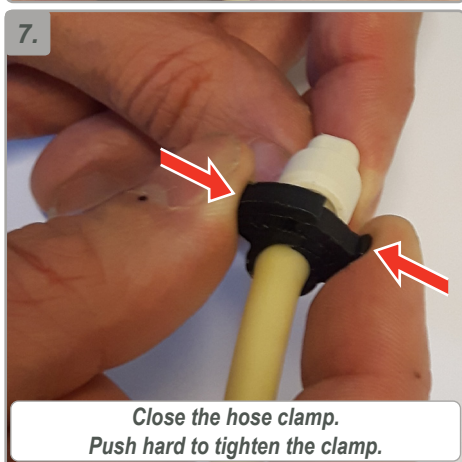
Disconnect the hose.



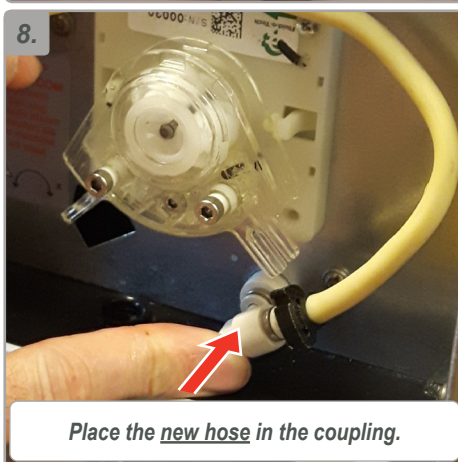
Loosen the hose clamp.



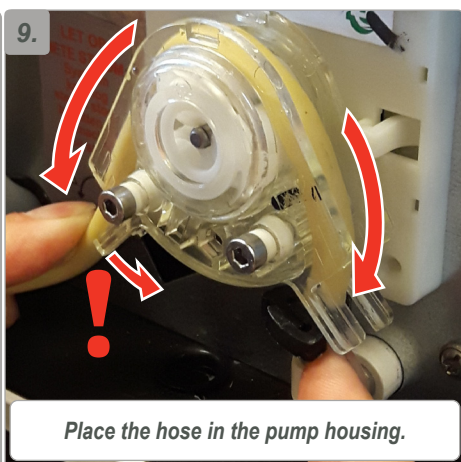
Pull off the hose and exchange with the new silicone hose.



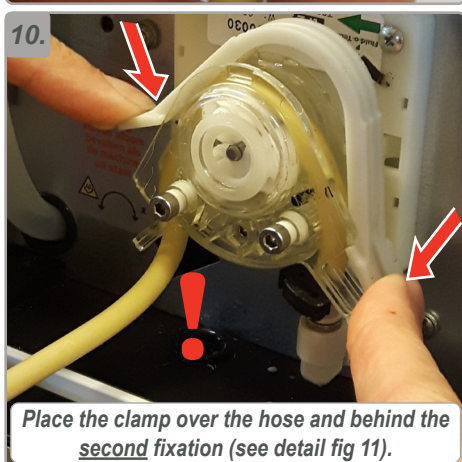
Close the hose clamp. Push hard to tighten the clamp.



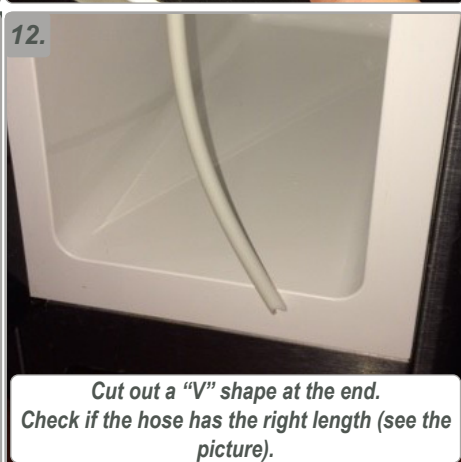
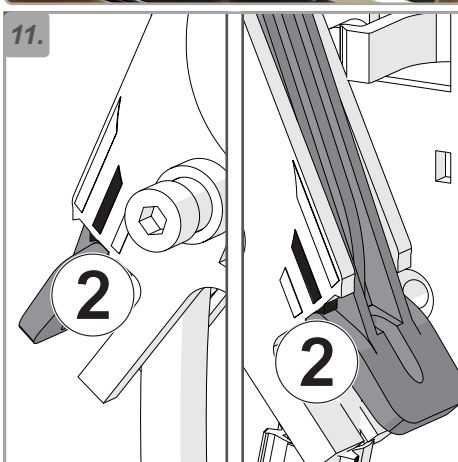
Place the new hose in the coupling.



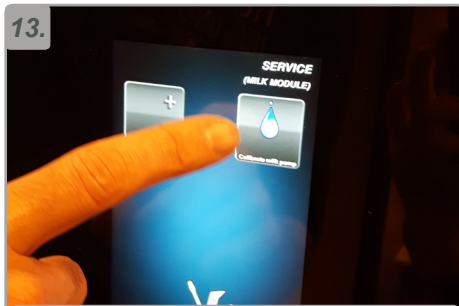
Place the hose in the pump housing.



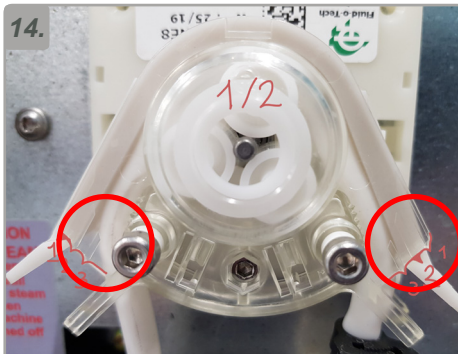
Place the clamp over the hose and behind the second fixation (see detail fig 11).



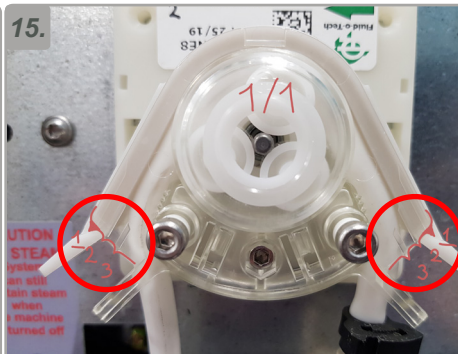
Cut out a "V" shape at the end. Check if the hose has the right length (see the picture).



13. Perform the pump calibration, follow the display instructions.
If the pump fails the calibration, place the white clip in position 1/2 as shown in picture 14.



14. Make sure the left side is set on 1 and the right side on 2 do not switch it around.

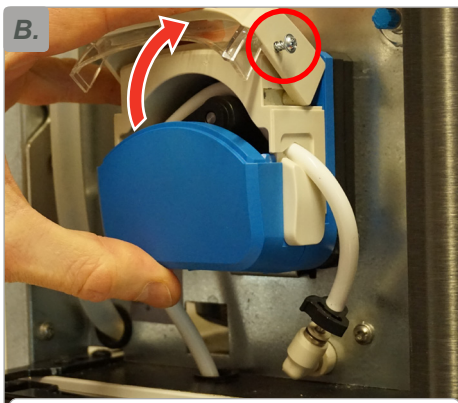


15. Warning: Do not set the pump on an 1/1 position shown in picture 15. This can result in backflow.

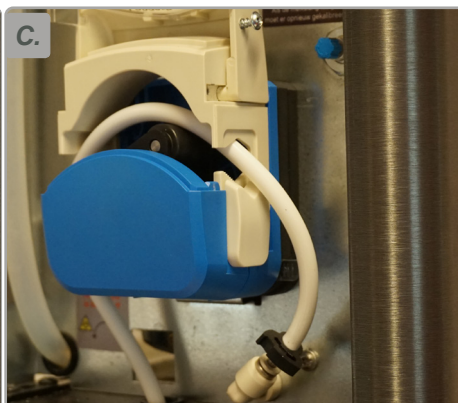
FreshMilk version 2.0



A. Open the door.



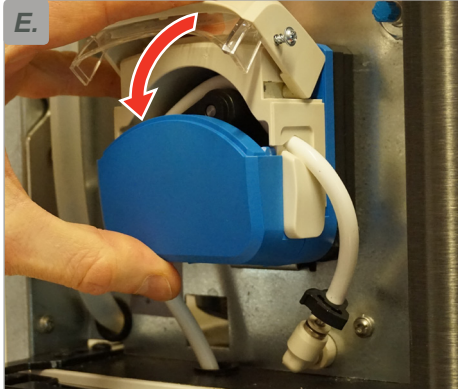
B. Loosen the screw until the pump head is unlocked



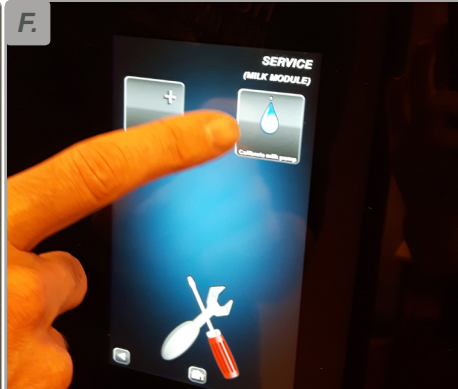
C. Open the pump head, remove the hose from the coupling and the pump.

D. Follow the instruction in fig. 4 to 8

1. Disconnect the hose
2. Loosen the hose clamp
3. Pull off the hose and exchange with the new silicone hose
4. Close the hose clamp, push hard to tighten the clamp
5. Place the new hose in the coupling



E. Close the pump head and lock the pump head with the screw.



F. Perform the pump calibration, follow the display instructions.